

Maintenance and Safety Precautions

- Turn ON/OFF switch to OFF and unplug your wheel from the power source before cleaning or inspection.
- Never hose down the machine. Clean off the potter's wheel with a damp cloth. Drain your splashpan regularly to avoid a build up of excessive water and clay. Detach the splash pan after each use and clean out thoroughly.
- Touching switches or plugs with wet hands may result in electrical shock.
- Do not tamper with the electrical circuit and controller of your wheel. You may be at risk of getting an electrical shock. Your potter's wheel is a precision instrument and it is advised that you refer operation or performance complaints to a Shimpo-referred, qualified technician.
- Use good judgement and caution when in use around children. Adult supervision must be provided when using around children.
- Take off metal accessories such as rings and watches before handling.
- Do not pick up the wheel by the wheelhead. You may bend the shaft.
- Unplug your wheel from power source if you will not be using it for an extended period of time.

Warranty

LIMITED EXPRESS WARRANTY

Shimpo warrants, to the original purchaser of new products only, that this product shall be free from defects in workmanship and materials under normal use and proper maintenance for one year from the date of original purchase. This warranty shall not be effective if the product has been subject to overload, misuse, negligence, or accident, or if the product has been repaired or altered outside of Shimpo's authorized control in any respect which in Shimpo's judgment, adversely affects its condition or operation.

DISCLAIMER OF ALL OTHER WARRANTIES

The foregoing warranty constitutes the SOLE AND EXCLUSIVE WARRANTY and Shimpo hereby disclaims all other warranties, expressed, statutory or implied, applicable to the product, including, but not limited to, all implied warranties of merchantability and fitness.

LIMITATION OF REMEDY

Buyer must have Shimpo's authorization before returning the product, properly repackaged, freight prepaid to Shimpo to obtain warranty service. Under this warranty Shimpo's SOLE OBLIGATION SHALL BE TO REPAIR OR REPLACE the defective product or part, at Shimpo's option. Shimpo reserves the right to satisfy warranty obligation in full by reimbursing Buyer for all payments made to Shimpo, whereupon, title shall pass to Shimpo upon acceptance of return goods.

INDEMNIFICATION & LIMITATION OF DAMAGES

Buyer agrees to indemnify and hold Shimpo harmless from and against all claims and damages, imposed upon or incurred, arising, directly or indirectly, from Buyer's failure to perform or satisfy any of the terms described herein. In no event shall Shimpo be liable for injuries of any nature involving the product, including incidental or consequential damages to person or property, any economic loss or loss of use.

MERGER CLAUSE

Any statements made by the Seller's representative do not constitute warranties except to the extent that they also appear in writing in this contract. This writing constitutes the entire and final expression of the parties' agreement.

Troubleshooting

Problem Wheelhead does not turn

- Is the wheel plugged in to the power source?
- Is the power switch/breaker in the "on" position?
- Is the power source working correctly and supplying the correct amount of electrical current?
- Is the foot pedal cord plugged in to the wheel body?
- Is the pedal at the "0" position (heel of the foot pedal completely down)?
- Are there several wheels or other equipment/appliances on the same circuit? (Check the breaker to see if the circuit has been overloaded.)

Problem Unusual sound coming from the wheel body

- Is the wheel resting on a solid surface and level?
- Is there too much clay on the wheelhead?
- Is the clay totally centered?
- Are any of the adjustable legs loose?
- Has the wheelhead bolt been tightened completely?

Problem The wheelhead stops turning

- Did the wheel stop turning when clay was added to the wheelhead? The wheel could be overloaded causing the built-in breaker to open, stopping the wheel. Remove some clay. Allow the breaker to cool. Turn on. If the breaker opens again see your authorized Shimpo dealer.
- Did an overload cause the breaker/fuse to open at the main power source?
- Has the power cord become unplugged?

Problem The wheelhead turns in the opposite direction

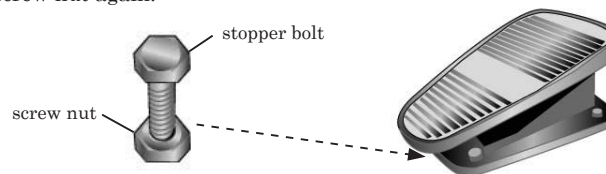
- Allow the wheel to stop turning completely. Turn the forward/reverse switch to the desired direction.

Note directions:

Forward is clockwise; Reverse is counter clockwise

Problem The wheelhead does not turn after pedal has been replaced.

Loosen screw nut of stopper bolt by spanner, twist stopper bolt until wheelhead turns, then tighten screw nut again.



Specification

Model	RK-3E-K1
Motor	400W AC220V 60Hz
Drive System	Direct Drive DC Brushless Motor
Wheelhead speed	0~300rpm
Speed control	Remote Foot Pedal
Wheelhead Direction	Clockwise/Counter-Clockwise
Wheelhead	350mm light alloy casting
Dimension	600×702×580mm Max
Ship Weight	42.5kg

Copyright © Nidec-Shimpo Corporation 2001. All rights reserved. Product specifications are subject to change without notice.

NIDEC-SHIMPO CORPORATION

1 Kohtari-Terada, Nagaokakyo-city, Kyoto, Japan
PHONE:075-958-3608 FAX:075-958-3647

POTTER'S WHEEL

RK - 3E - K1



INSTRUCTION MANUAL

Congratulations on your purchase of a Shimpo RK-3E-K1 series potter's wheel! We trust you will enjoy many years of professional results from your wheel. Please read the entire instruction manual thoroughly before initial set-up and operation; the information contained herein will aid you in operating your Shimpo RK-3E-K1 wheel safely and with excellent results.

If you have any questions regarding our product(s), call your local Shimpo dealer or contact Shimpo Corporation directly for assistance at: 075-958-3608

Features and Benefits

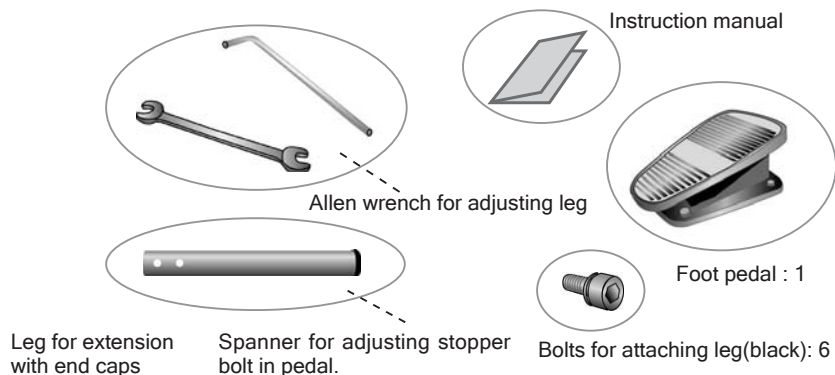
The RK-3E-K1 Series offers the power, resilience and quietness that Shimpo wheels are known for. Features of the RK-3E-K1 include

- Heavy-duty steel construction assures long service life.
- Brushless DC motor direct drive system ensures powerful yet essentially noiseless operation.
- Unique closed loop micro-controller maintains required speed under heavy load.
- Foot pedal offers flexibility in speed adjustment.
- Clockwise and counter-clockwise wheelhead rotation.
- One-year warranty.

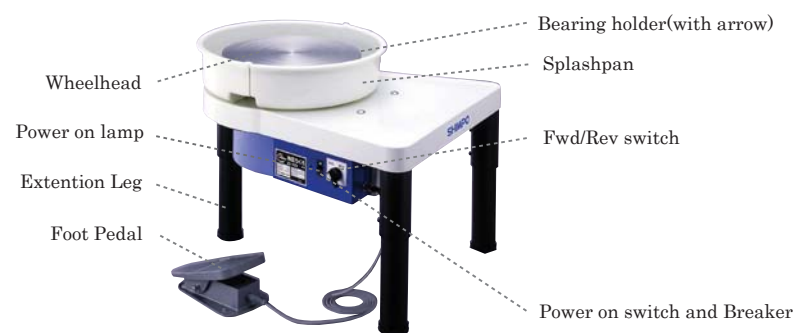
Inspection/Standard Accessories

If upon delivery shipping damage is detected, do not operate the wheel. Notify the shipping carrier immediately for damage claim instructions. Refer to product nameplate and record serial number for future reference.

■ Items included with the RK-3E-K1 are



Description of parts



Important Safety Precautions

This machine is built specifically for use as a potter's wheel. Use for purposes other than pottery may put you at risk of danger or personal injury.

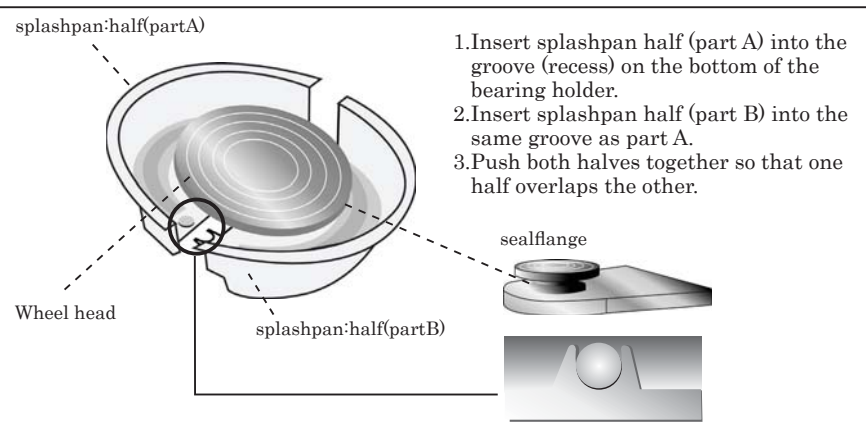
- Do not use your wheel with any voltage other than that specified.
- Do not plug power cord into an extension cord (plug directly into an electrical wall outlet). Do not pull on the power cord to unplug; pull on plug.
- Do not overload the wheelhead with more than the recommended weight of clay. Do not force the wheel to stop as this may damage your wheel.
- Set up the potter's wheel on a level surface.
- Do not remove the blue guard at the bottom of the wheel. Refer all electrical repairs to a qualified electrical technician.

After operating, before cleaning or inspection:

1. Turn ON/OFF switch to OFF
2. Unplug wheel from power source

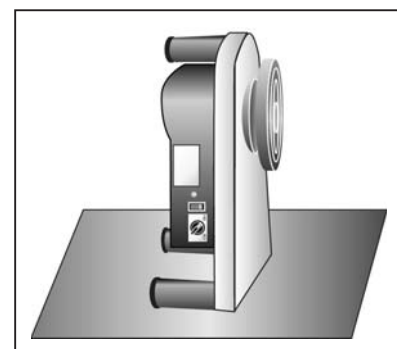
Installation

Installing the Splashpan



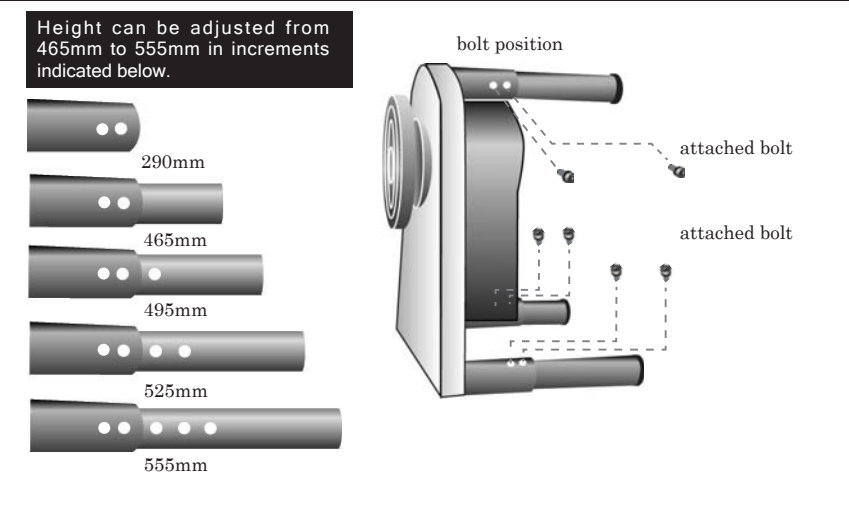
Installing Legs

1. Place the unit on its front side as shown in the diagram. Place a cloth or carpet under the unit to protect from scratching. Support the unit at all times to prevent wheel from tipping over thereby damaging the wheelhead



2. Push black rubber end-cap into the end of the leg.

3. Insert all three leg extensions to equal height. Insert 6 black bolts (2 per leg) with Allen wrench (included) and tighten into place.



4. Refer to chart above for correct leg hole position for desired height.

5. Return unit to upright position.

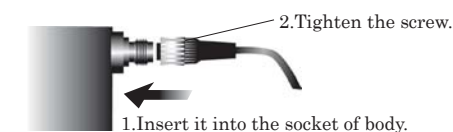
Installation of foot pedal

Plug the connector into body before you insert the plug into the socket

1. Check the socket of connector and body, and then insert the connector into body.



2. Tighten the connector until the screw of connector doesn't rotate.



Operation

Operation-Start

1. Turn on the power switch

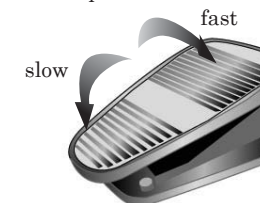


2. Light turns on

3. Turn Fwd/Rev switch in required direction of rotation. Fwd=clock-wise, Rev=counter-clockwise.

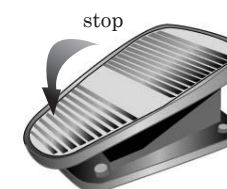


4. Press pedal forward to increase speed or backward to decrease speed. Press fully back to stop the wheel.



Changing Wheelhead Direction

1. Return the pedal to the off (heel totally down) position (see diagram). Allow wheelhead to stop completely.



2. Turn Fwd/Rev switch to the desired direction (see diagram). Press pedal.

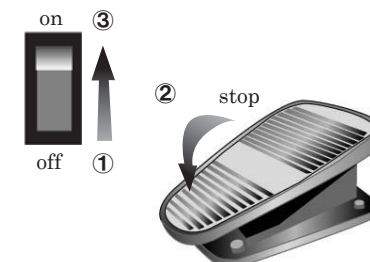


Note: If you do not return pedal to the off position the direction will not change even if the Fwd/Rev switch is changed.

Motor Breaker

The power on switch has two functions. It serves as the primary on/off power switch and also as a reset switch. It will shut off if the motor is overloaded. If an overload occurs follow these steps to restart the unit:

- ① Switch the on/off-breaker switch to the off position (refer to diagram).
- ② Return the foot pedal to the off position (refer to diagram).
- ③ Turn the power switch back on.



Note: If the pedal is not returned to the off position before the power switch is turned on the wheelhead will not turn; your wheel will not respond.